

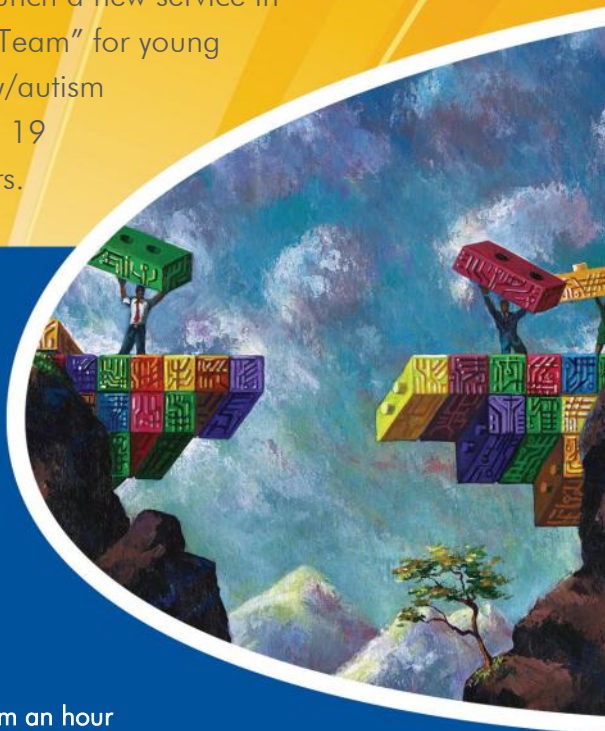
Bridge the Gap

A NEW Specialist service from Caremark

Caremark Ltd are excited to launch a new service in West Sussex, "Bridge the Gap Team" for young people with a learning difficulty/autism who are aged between 16 and 19 (transitional) and up to 25 years.

We can provide...

- Personal care
- Support with recreational activities such as clubs and groups.
- Support with appointments
- Support with finding employment
- Support parent/carers with appointments
- Any visit can be accommodated from an hour to 24 hour and respite (in the home) for the carer.



Respite accommodation will be available in the near future.

Caremark can build up social networks for activities and friendship for the individuals who use this service if they so wish. We will ensure that a person's values and rights such as dignity, beliefs and freedom of choice are respected at all times.

www.caremark.co.uk



The mark of excellent care

A SPECIALIST SERVICE FROM CAREMARK



The Team...

The team of support workers are specially selected through interview process.



The interview panel includes customers with special needs, who are a vital part of the selection process. The staff all have a criminal records bureau (CRB) enhanced check. They have been trained by our own qualified trainer, in providing support to those with specialist needs. This training is on-going and updated. Caremark also provide staff with training that may be specific for the individual. Their aim is to provide the highest quality, professional support and care to meet individual needs using a person centred approach.

Caremark Ltd believes in maintaining fair and competitive fee levels. Caremark Ltd is registered with the Care Quality Commission (CQC).

Caremark can support you with:

Personal care



Finding a job



Going out



Appointments



If you would like more information on our service please do not hesitate to contact the Manager, who will be more than willing to discuss it with you on the phone or in person.

T 01798 873550

F 01798 873121

E pulborough@caremark.co.uk

www.caremark.co.uk

